



ARTE NEL  
DESIGN



**Every piece tells a story,  
crafted once, never repeated.**

*Arte Nel Design*







Are you scared of being ordinary? **We are too.**

That's why **Arte Nel Design** doesn't just make furniture.

Unique? Of course. But that's only the beginning.

**We hate blending in and we suspect you do too.**

That's why we craft furniture that tells stories, disrupts trends and doesn't ask for permission.

**Our work isn't for everyone and that's exactly the point.**







## A personalized journey.

Beyond craftsmanship, we focus on a **personal connection**.

Each piece begins as a canvas for your personal vision, evolving into a truly **unique work of art**.

By offering **prices on request**, we ensure that your unique needs and desires are fully understood and reflected in the final creation.

Every piece is co-created with **care**, resulting in a meaningful work of art that carries **your story**.

Arte Nel Design

*Please Note:*

*The images in this catalogue serve as a guide. Each piece of art integrated into our furniture is uniquely crafted by our artists upon order. As such, the artwork you receive may vary slightly or completely from the images shown, ensuring that each piece is distinctively one-of-a-kind.*





**DESIGN + SCULPTURE**









**“Like a nest suspended in time, it embraces and envelops, turning every moment into pure contemplation”.**





BOWIE Armchair

W 115cm | 45.2" D 90cm | 35.4" H 140cm | 55.1"

Polished liquid metal structure, bronze sculpture base (custom designed), upholstery in fabric or leather.



DESIGN + ART / SCULPTURE



“A living core pulses, silently asserting its presence”.





PICCADILLY Cabinet

W 105cm | 41.3" D 42cm | 16.5" H 160cm | 63"

Multilayer wood structure, dark wood veneer doors, liquid brass base and structure, bronze sculpture (custom designed).





“Where waves cradle whispers of bronze, tranquillity finds its form.”



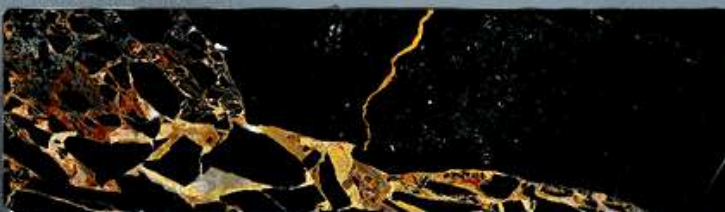


ROYAL Armchair

W 90cm | 35.4" D 84cm | 33" H 74cm | 29.1"

Multilayer wood structure, velvet, bronze sculptures (custom designed).





“In the silence of the geometry, the spirit whispers.”





URBAN Sideboard

W 305cm | 120" D 50cm | 19.6" H 88cm | 34.6"

Multilayer wood structure, marble, golden leaf, bronze sculpture (custom designed).



**"In the embrace of regal curves  
lies a hidden jewel, cradling  
dreams in its open heart."**







APART Chair  
W 64cm | 25.1" D 58cm | 22.8" H 90cm | 35.4"  
Upholstery in fabric/leather, bronze sculpture (custom designed).





“Echoes of ancient columns, bearing the weight of art and dreams alike”.





CAPITAL Coffee table

W 62cm | 24.4" D 45cm | 17.7" H 55cm | 21.6"

Column in ribbed wood lacquered with metallic effect, metal tops, bronze sculpture (custom designed).





**“Soft layers unfold, each a silent guardian of an embedded secret”.**





KISSEN Sofa

W 280cm | 110.2" D 110cm | 43.3" H 76cm | 29.9"

Multilayer wood structure, upholstery in fabric/leather, bronze sculpture (custom designed).

KISSEN Armchair

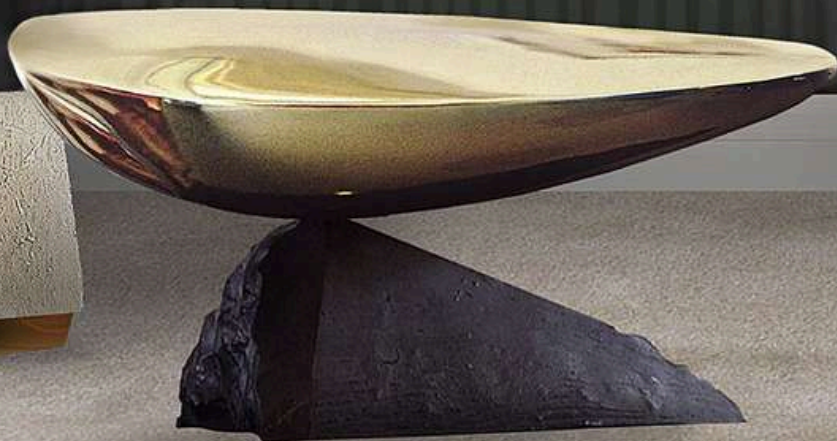
W 140cm | 55.1" D 110cm | 43.3" H 76cm | 29.9"

Multilayer wood structure, upholstery in fabric/leather, bronze sculpture (custom designed).

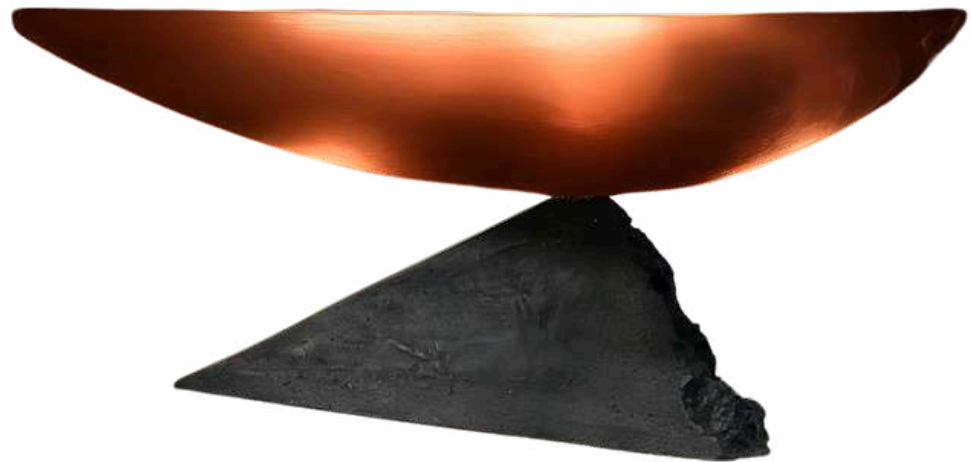




**“When the earth meets the air, roots and breezes combine forming a perfect balance”.**







KERNEL Coffee table

W 110cm | 43.3" D 80cm | 31.4" H 50cm | 19.6"

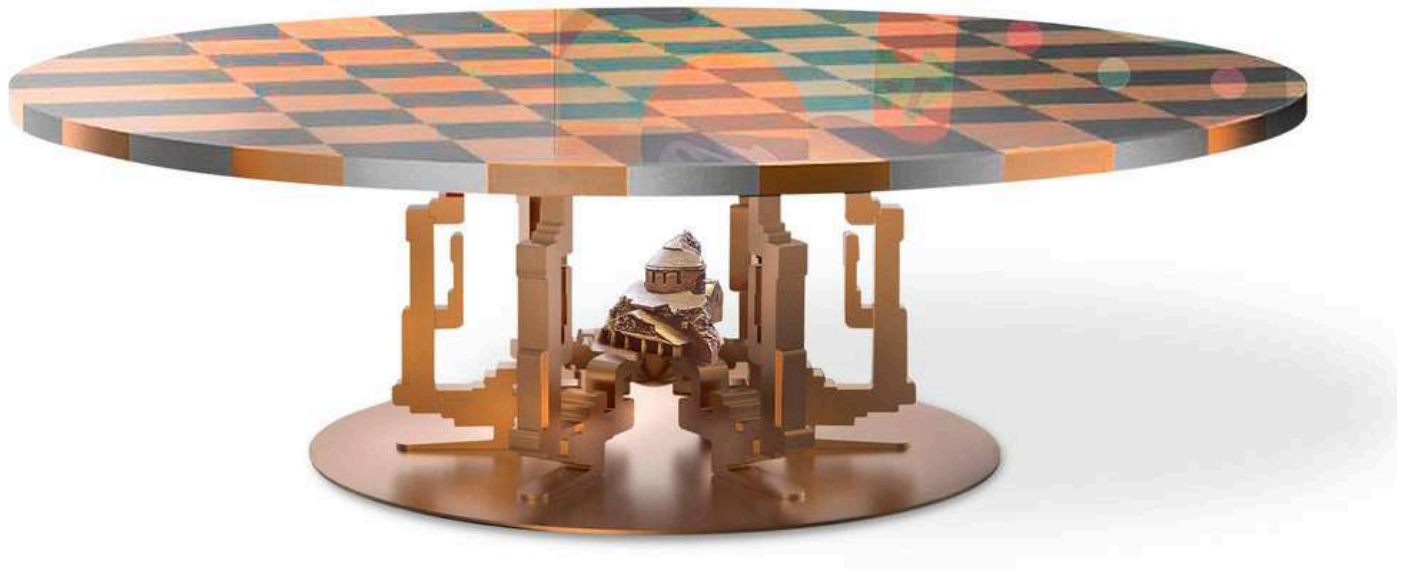
Multilayer wood structure, liquid metal finish, bronze sculpture base (custom designed).



"Branches cradle a heart of creation, where light and shadow dance in a warm embrace."





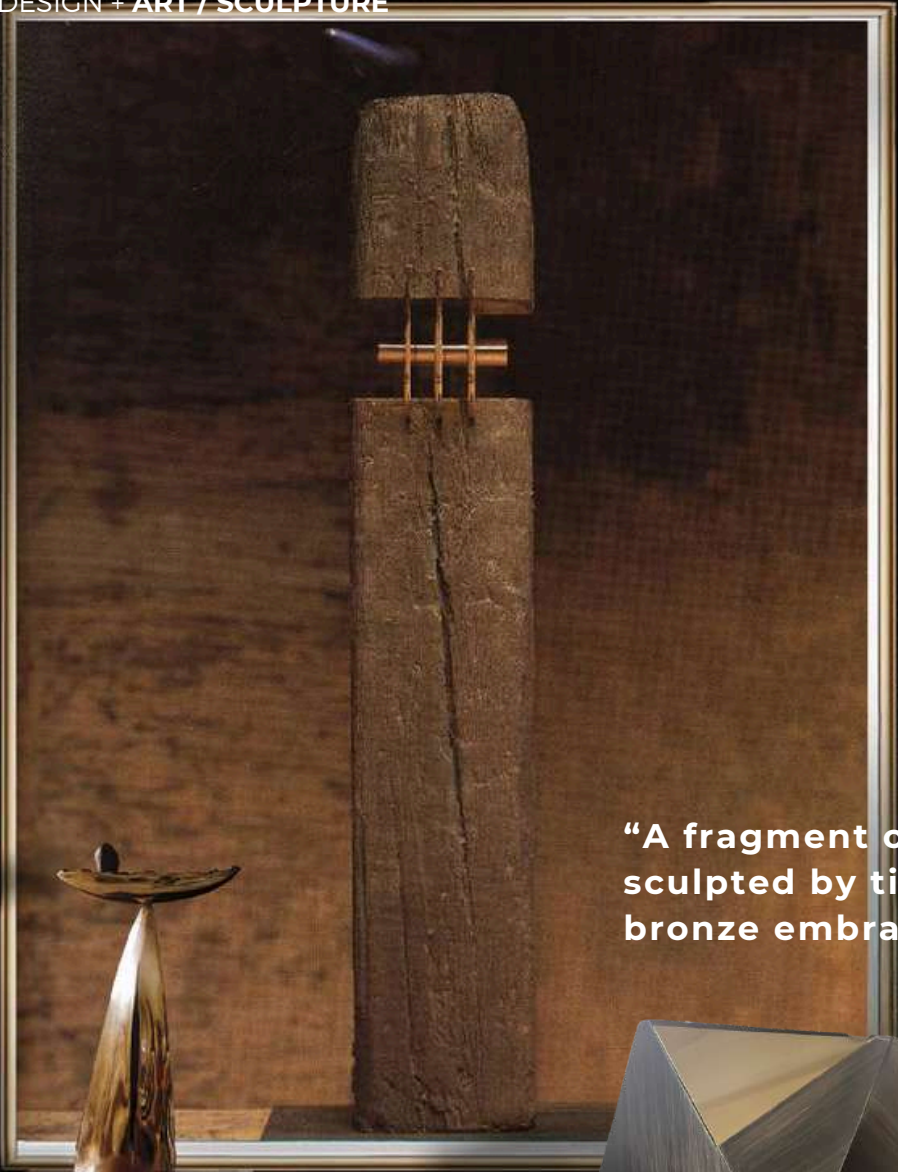


OBLIVION Table

ø 250cm | 98.4" H 75cm | 29.5"

Multilayer wood structure, liquid copper finish base, gold and silver leaf top, bronze sculpture (custom designed).





**“A fragment of light,  
sculpted by time, where brass and  
bronze embrace eternity.”**







CRYSTAL Coffee table

W 40cm | 15.7" D 42cm | 16.5" H 45cm | 17.7"

Multilayer wood structure, brushed brass covering, bronzed glass top, bronze sculpture (custom designed).



DESIGN + ART / SCULPTURE



“Life flows in continuous curves, rising to cradle beauty at its core”.





STEP Coffee table

W 160cm | 62.9" D 80cm | 31.4" H 44cm | 17.3"

Multilayer and solid wood structure, dark oak veneer, liquid bronze metal sheets, bronze sculpture (custom designed).



**"Delicate metallic threads rise, embracing the enigma of a suspended bronze heart within."**







TYLER\_1



TYLER\_2



TYLER Coffee tables

1) ø 60cm | 23.6" H 52cm | 20.4"

2) ø 30cm | 11.8" H 72cm | 28.3"

Metal structure with painted glossy finish, bronze sculpture (custom designed), metal or crystal tops.



**“Echoes of the past embrace visions of tomorrow, as sculptural whispers curve through the regal silhouette of time.”**







ANGUS Sofa

W 250cm | 98.4" D 105cm | 41.3" H 70cm | 27.5"

Multilayer wood structure, upholstery in fabric/leather, bronze sculpture (custom designed).



**“Inspiration stirs from within, cleaving silence to unveil the art it cradled.”**





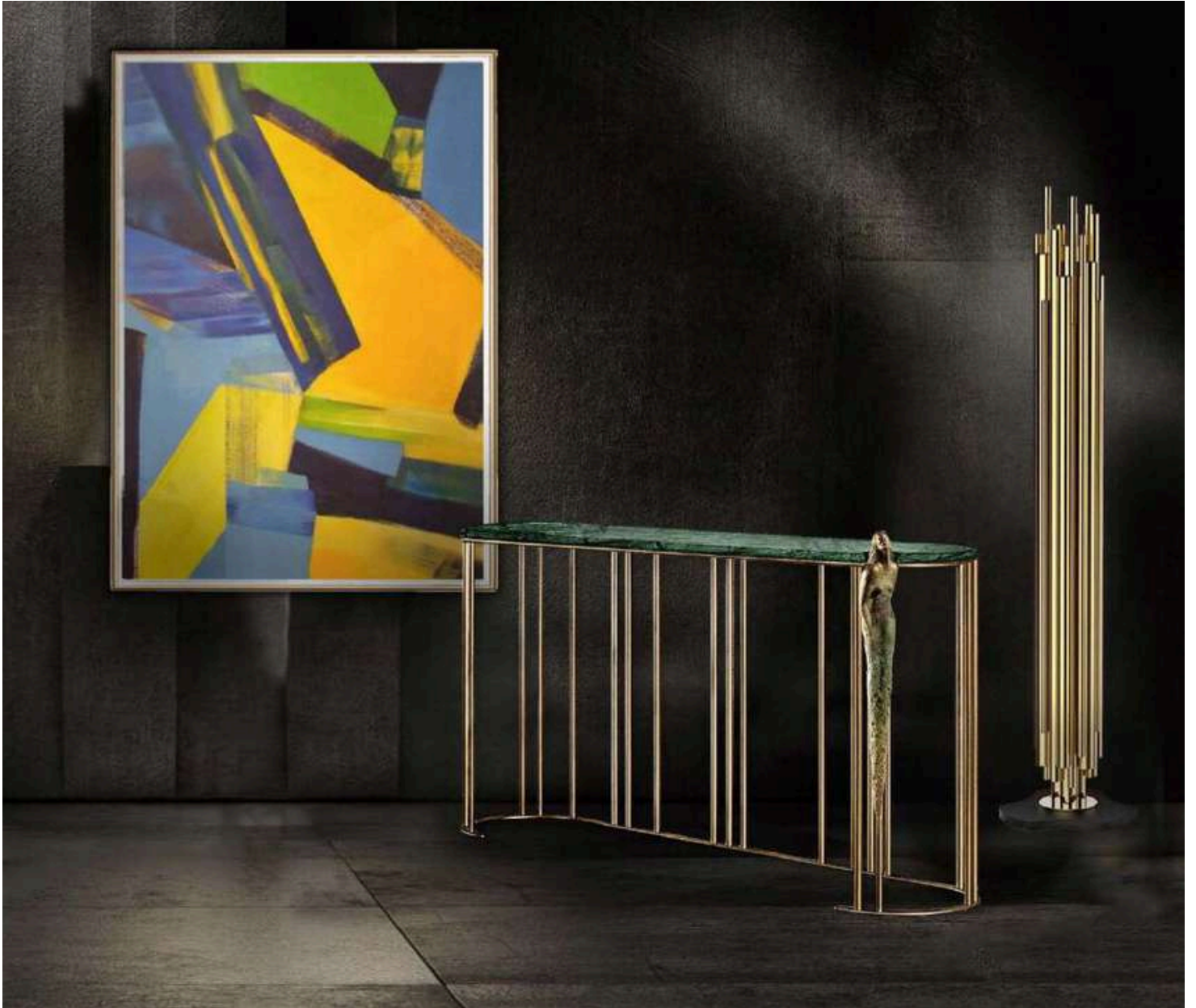


CELINE Cabinet

W 90cm | 35.4" D 55cm | 21.6" H 130cm | 51.1" (+40cm | +15.7" )

Multilayer wood structure, liquid brass finish, bronze sculpture (custom designed).



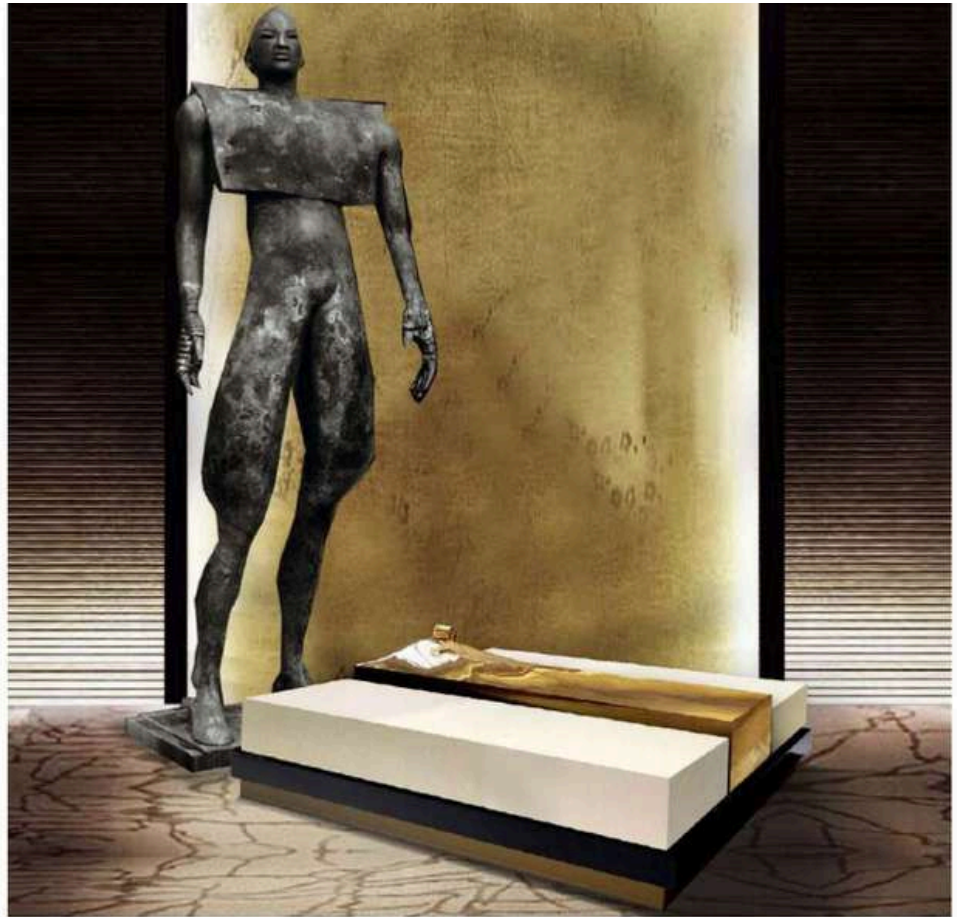


BIRTH Console

W 110cm | 43.3" D 30cm | 11.8" H 85cm | 33.4"

Verde Guatemala marble top, metal structure with painted glossy finish, bronze sculpture (custom designed).





DICE Coffee table

W 144cm | 56.6" D 73cm | 28.7" H 30cm | 11.8"

Multilayer wood structure, venetian stucco top, bronze sculpture (custom designed), dark oak wood base.



DUNE Chair

W 60cm | 23.6" D 52cm | 20.4" H 75cm | 29.5"

Wood and brass painted metal structure, bronze sculpture (custom designed), fabric or leather upholstery.





**DESIGN + PAINTING**







**"A realm where each line is a  
silent custodian of artistic  
expression."**







CINEMA Sideboard

W 220cm | 86.6" D 50cm | 19.6" H 80cm | 31.4"

Multilayer wood structure, lacquered cover, brass base and legs, hand painted doors (custom made subject).



DESIGN + ART / PAINTING



**“A living canvas breathes, silently capturing the essence of grace.”**





PICCADILLY Bar Cabinet

W 105cm | 41.3" D 42cm | 16.5" H 160cm | 63"

Multilayer wood structure, handmade materic finish, hand painted doors (custom designed).



“Where colors burst and stories weave,  
a keystone of connection links lives in vivid communion.”







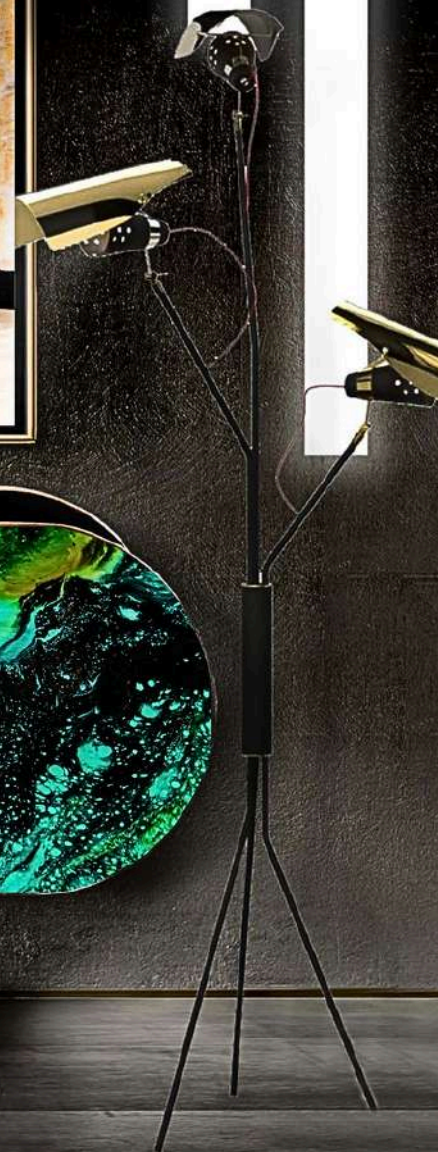
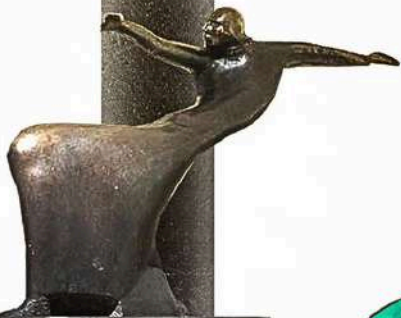
SKY Dining table

W 300cm | 118.1" D 110cm | 43.3" H 75cm | 29.5"

Multilayer wood structure, epoxy resin finish, painted metal details, hand painted (custom designed).



"Where painted stories soar above, cradled by the silent strength of unseen pillars."





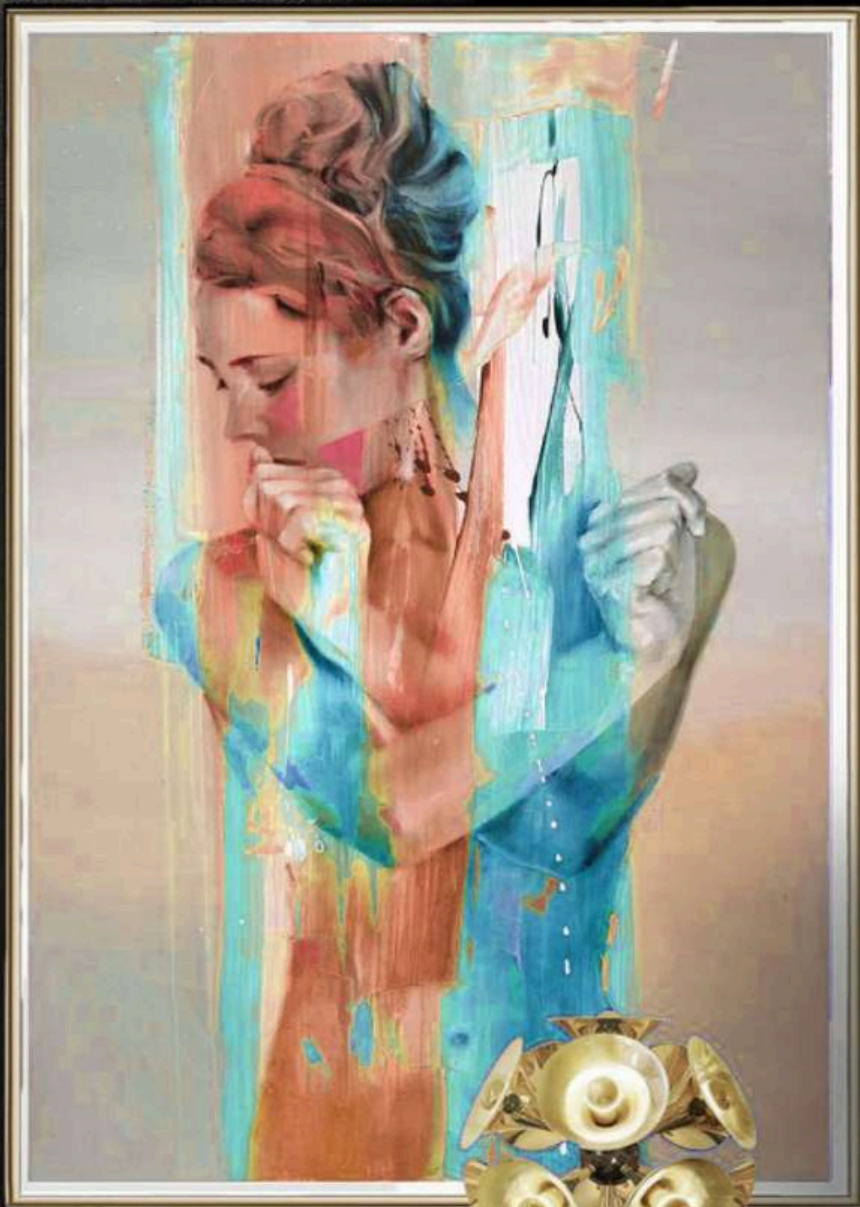


COVENT 1 Sideboard

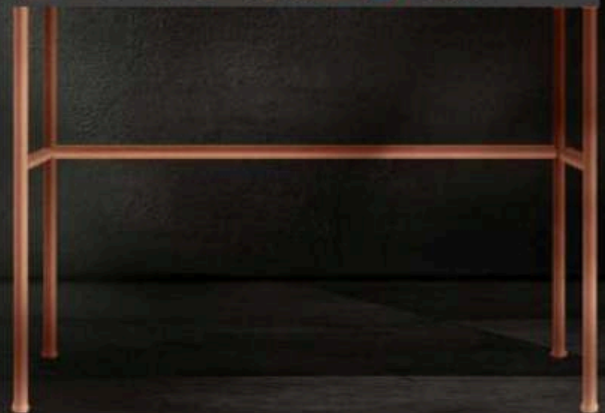
W 150cm | 59" D 50cm | 19.6" H 105cm | 41.3"

Multilayer wood structure, zebrawood veneer, brass base, hand painted doors (custom made subject).

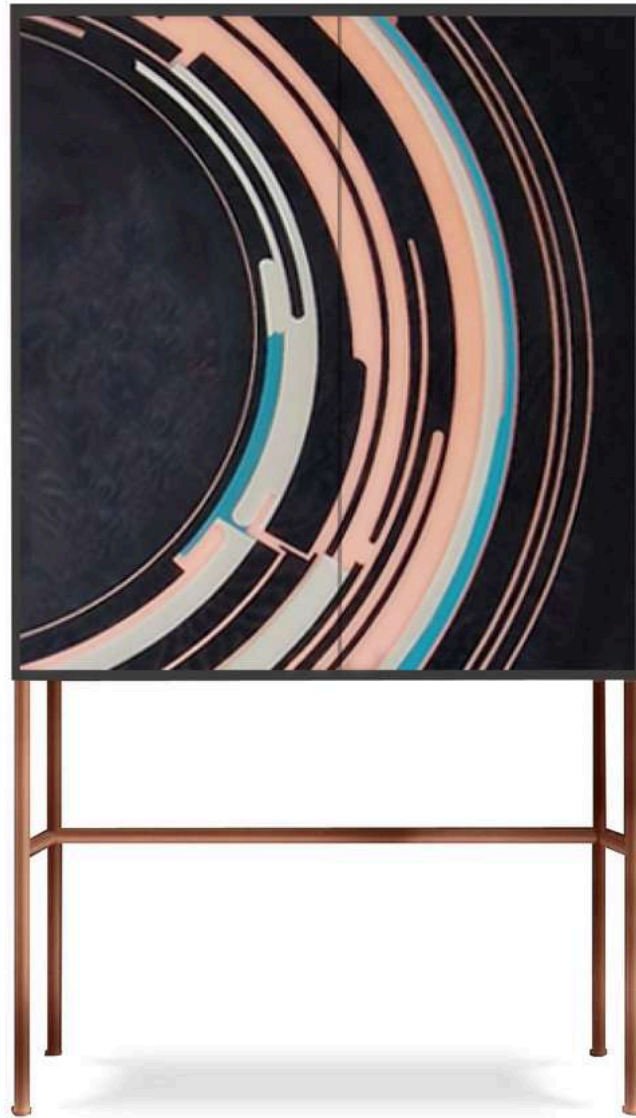




**“A canvas of simplicity, where the artful embrace of a painted surface magnifies the essence of harmony.”**







SQUARED Cabinet

W 100cm | 39.3" D 52cm | 20.4" H 180cm | 70.8"

Multilayer wood structure, dark olm veneer, polished copper-like legs, hand painted doors (custom made).



“Strong pillars uphold the vibrant weight of art,  
cradling its dynamic essence with unwavering grace.”





ALBERTO Dining table

W 400cm | 157.4" D 180cm | 70.8" H 72cm | 28.3"

Multilayer wood structure, rounded metal legs painted gold, artistic resin top.





"Colors burst framed in emotion, life's vibrant dance captured in hues."



BRIDGE Sideboard

W 250cm | 98.4" D 50cm | 19.6" H 96cm | 37.7"

Multilayer wood structure, dark oak veneer, hand painted doors (custom made).



DESIGN + ART / PAINTING



"Guardian of stories,  
whispering echoes of timeless beauty."





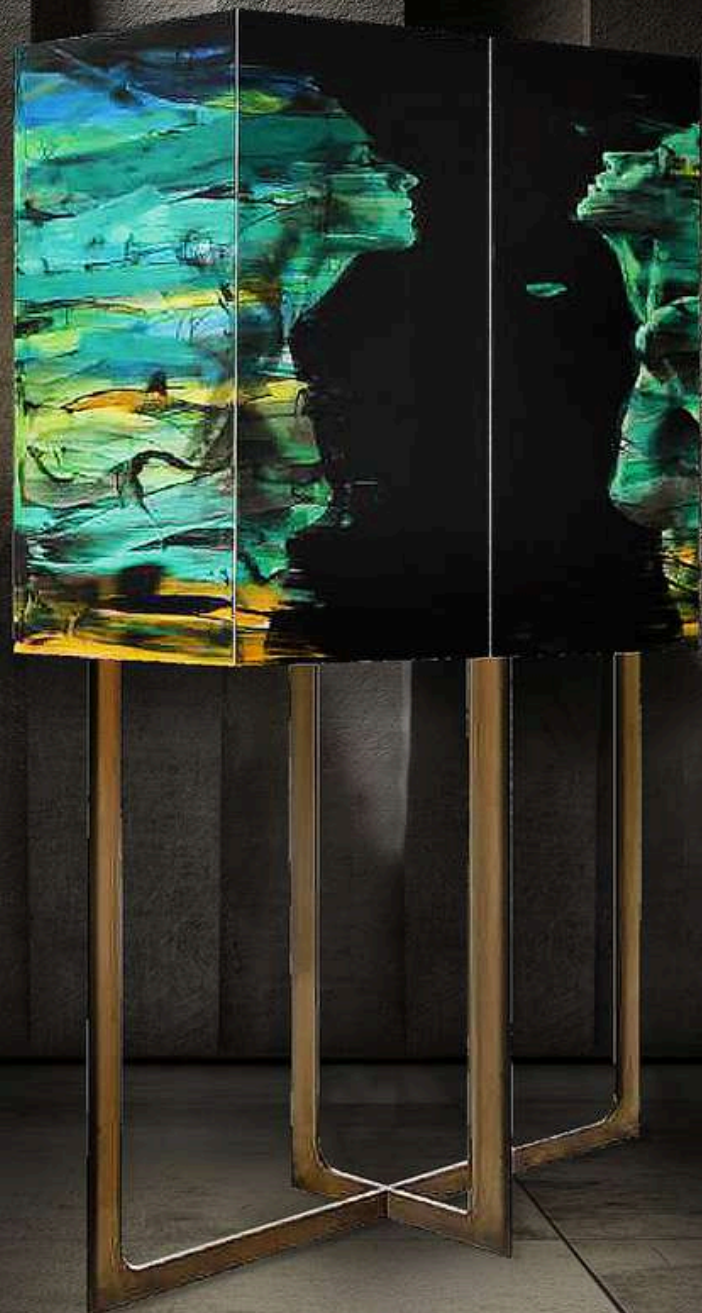
EXHIBITION Cabinet

W 220cm | 86.6" D 50cm | 19.6" H 80cm | 31.4"

Multilayer wood structure , liquid brass legs, liquid brass structure, hand painted doors (custom made).



DESIGN + ART / PAINTING



"Where paths entwine, destiny unfolds."



BRANDY Cabinet

W 90cm | 35.4" D 52cm | 20.4" H 180cm | 70.8"

Multilayer wood structure, , polished brass-like legs, hand painted structure and doors (custom made).



# ARTE NEL DESIGN

Headquarters:  
piazza Castello 4  
22060 - Carimate (CO) - Italy

Factory and Showroom:  
via dell'Artigianato 38  
22063 - Cantù (CO) - Italy

[info@arteneldesign.com](mailto:info@arteneldesign.com)  
[www.arteneldesign.com](http://www.arteneldesign.com)